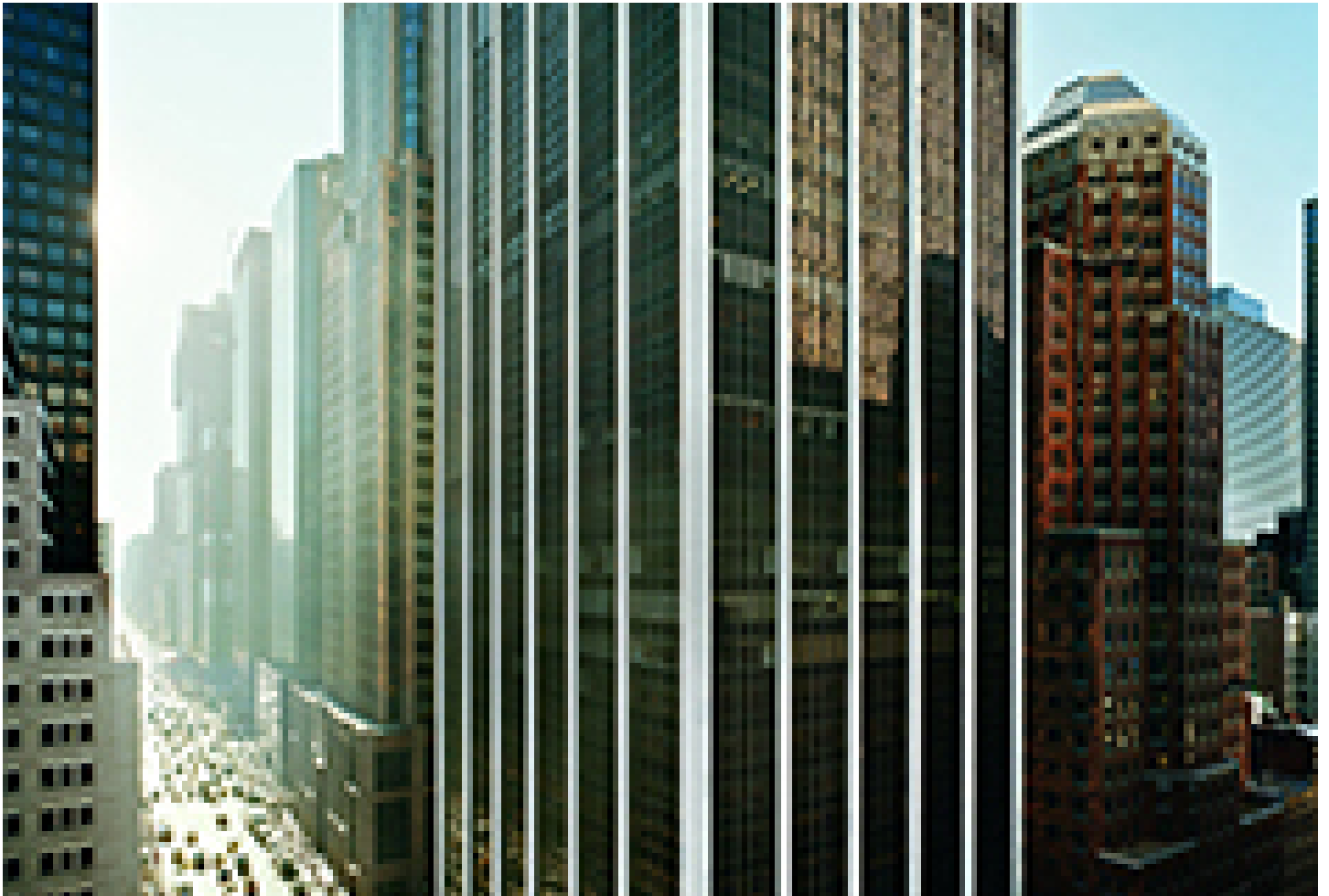




SL Green Realty inks 54,250 s/f lease with Hartree Partners at 1185 Ave. of the Americas

February 11, 2025 - Front Section



Manhattan, NY SL Green Realty Corp. has signed a new 12-year, 54,250 s/f lease with Hartree Partners covering the entire 24th and 25th floors at 1185 Ave. of the Americas.

“We’re excited that Hartree Partners has elected to locate its headquarters at 1185 Ave. of the Americas,” said Steven Durels, executive vice president, director of leasing and real property at SL Green. “This lease follows approximately 183,000 s/f of leases signed over the past 12 months and reflects the on-going desire by premier companies for distinctive, accessible, centrally located office space.”

Located along the Avenue of the Americas office corridor between West 46th and 47th Sts., the 42-story office tower has proximity to Bryant Park and direct access to the underground Rockefeller

Center concourse. The building is home to a tenant roster, including the Hess Corp., Syska Hennessy Group, Industrial & Commercial Bank of China and Northeast Series of Lockton Companies.

The tenant was represented by Ben Friedland, Munish Viralam, and Gary Davies of CBRE. The landlord was represented by Brian Waterman, Scott Klau, Brent Ozarowski, David Waterman, and Kevin Sullivan of Newmark.

New York Real Estate Journal - 17 Accord Park Drive #207, Norwell MA 02061 - (781) 878-4540