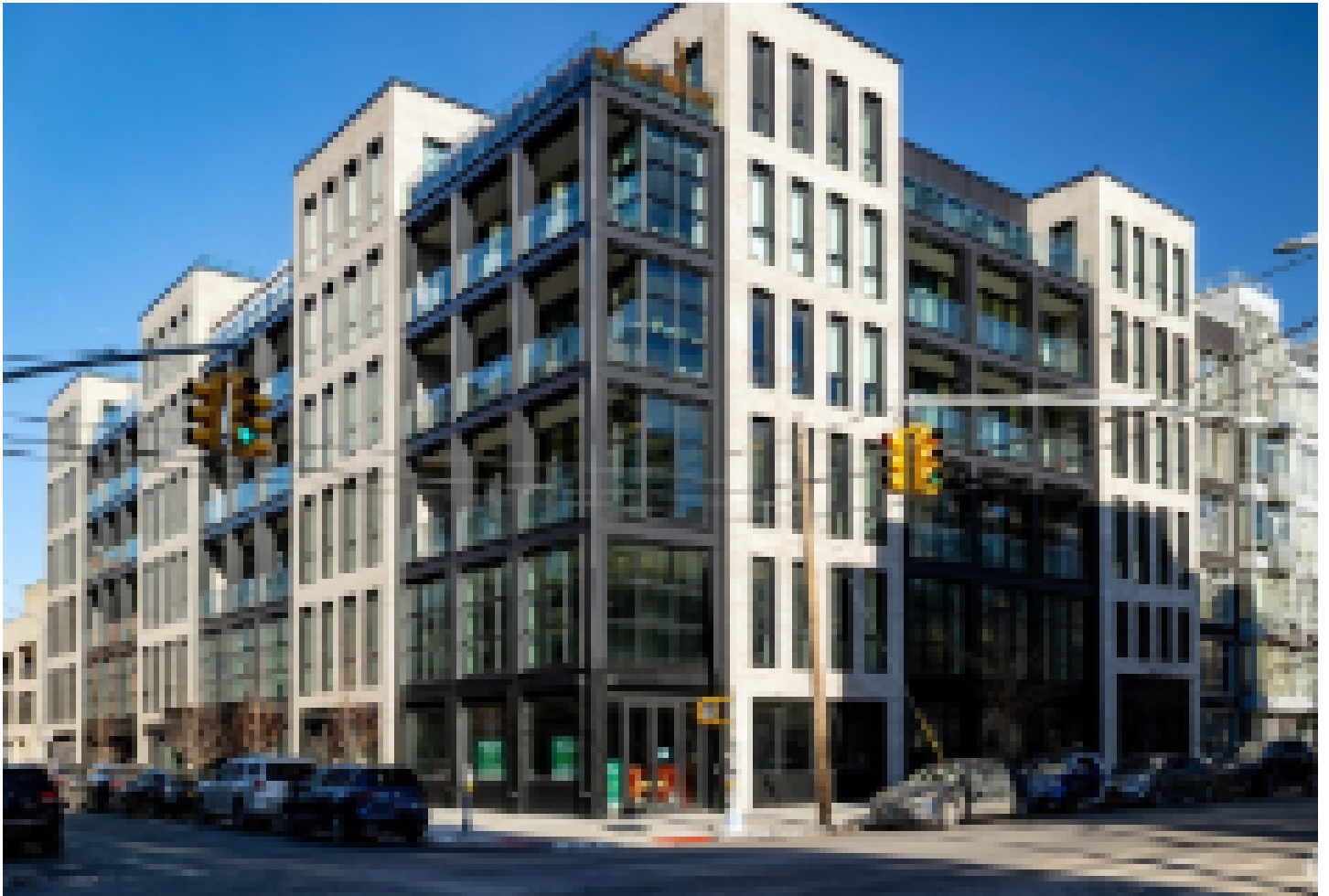




## **CBRE arranges 51,498 s/f lease for Bedford Stuyvesant New Beginnings Charter School**

March 08, 2024 - Front Section



Brooklyn, NY In a transaction arranged by CBRE, Bedford Stuyvesant New Beginnings Charter School (BSNBCS), a public charter school, signed a 51,498 s/f lease for the entire three-story commercial component of the newly constructed mixed-use building at 217 North 10th St. The property, which was designed by Morris Adjmi Architects, is located in Williamsburg.

The CBRE team of Jason Frazier, Jesse de la Rama, Jeremy Scholder, Chris Betting and Dean Rosenzweig led the leasing campaign at the property and arranged the lease on behalf of Largo, the developer of the Property.

“We are ecstatic about a deal which is not only mutually beneficial for Largo and BSNBCS but also a massive win for the borough of Brooklyn and New York City’s educational system,” said Frazier.

“Ultimately, new construction with great design, an abundance of natural light, soaring ceiling heights, a private entrance and tons of outdoor spaces combined with the adjacency to parks and transportation was the winning formula,” said Nick Werner of Largo. “It’s another great contribution to the neighborhood.”

BSNBCS will occupy the entire ground, second and third floors totaling 51,498 s/f.

New York Real Estate Journal - 17 Accord Park Drive #207, Norwell MA 02061 - (781) 878-4540