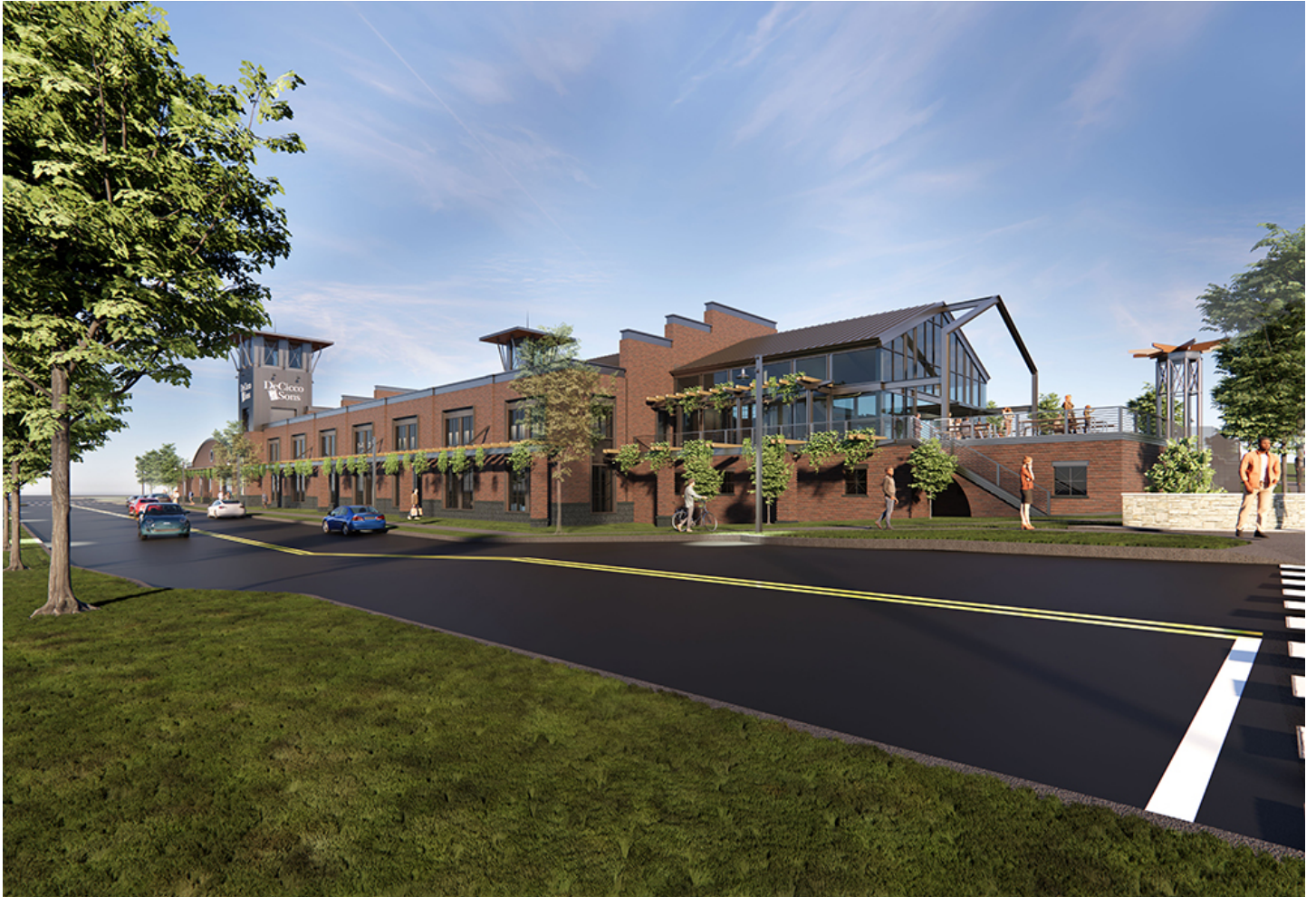




COOKFOX provides design for Hines' Daymark at Edge-on-Hudson

September 26, 2023 - Design / Build



Sleepy Hollow, NY Edge-on-Hudson, the mixed-use, transit-oriented community rising along the banks of the Hudson River, has achieved a series of milestones as the project expands construction to meet demand. Four years since home sales began on the 70-acre site along the waterfront, the development has proved to be among the most sought-after in the Metro New York region. In its first phase, all condominium residences by Toll Brothers sold-out prior to construction, as did nearly all of the 92 townhomes offered. More than 98% of the 425 apartment residences at Edge-on-Hudson have been leased. Moving into its second phase, the master development team of Biddle Real Estate Ventures (BREV) and PCD Development announced a series of new retail and residential construction projects on-site.

- The sales gallery for waterfront condominium residences at The Daymark opened in July.

Currently under construction, led by Houston-based Hines as development manager, The Daymark is the first building directly on the waterfront at Edge-on-Hudson and will add 100 new homes to the community. The Daymark is expected to be completed in spring 2025

- Site work began in August for 90 new townhomes and a clubhouse by Sun Homes. This new neighborhood borders both Kingsland Point Park and the new Tappan Zee Park and features park and river views. Sales are anticipated to begin in Q1 2024
- Construction of a new 30,000 s/f DeCicco & Sons market began in August, located at the community's entry along Beekman Ave. and Legend Dr.
- Plans for a medical office building are set to be presented to the Village of Sleepy Hollow Planning Board in fall 2023
- Planning for new parkland and open space is underway, following the opening of phase one of the Sleepy Hollow RiverWalk at Edge-on-Hudson, which restored access to a section of Hudson River shoreline that had been closed for more than a century

New condominium residences under construction at The Daymark have been a hot commodity at Edge-on-Hudson, with 25% of homes already under contract within just two months of the sales gallery's opening. The first building to be located directly along the waterfront, The Daymark features architectural and interior design by COOKFOX, a leader in biophilic design, and sets a new standard for waterfront living along the Hudson. The Daymark will also include more than 9,000 s/f of retail space, featuring the first waterfront restaurant in the community.

The first retail construction at Edge-on-Hudson began in August as site work for the 11th DeCicco & Sons Market in Westchester County got underway. The market's design features a brick exterior, a standing seam metal roof, glass and steel cupolas, steel lintels, and clearstory windows. The market's mezzanine is also set to include a beer garden and restaurant concept.

The DeCicco & Sons Market will deploy a series of green initiatives for both construction and operation and is set to be built to LEED certification standards, keeping energy efficiency at the top of mind. Market operations will include a natural refrigeration system, a non-ozone-depleting refrigerant that DeCicco & Sons was the first to bring to Westchester County. Heat expelled from the refrigeration system will be recycled for use as the market's heat and hot water in cold weather months. DeCicco & Sons will also install the company's largest solar array to date.

BREV managing member Peter Chavkin said, "Completion of phase one at Edge-on-Hudson has demonstrated that this community offers best-in-class amenities in residential construction, easy transit access and an extraordinary setting along the Hudson River. The combination is proving very compelling for both buyers and renters."

Jonathan Stein, founder and managing director of PCD development, added, "It's exciting to see retail construction on-site, to compliment new parkland and residences already completed or

underway. We look forward to welcoming the DeCicco & Sons Market, as well as a waterfront restaurant at The Daymark, and additional retail and office components currently in design.”

Edge-on-Hudson is located 25 miles north of Manhattan, near two Metro-North train stations, affording express access to Grand Central. Edge-on-Hudson is set to include 1,177 townhomes, condos and apartments; a 140-room boutique hotel; 135,000 s/f of retail space and 35,000 s/f of office space, in addition to more than 16 acres of new parkland. phase one of the new Sleepy Hollow RiverWalk at Edge-on-Hudson was recently completed and deeded to the Village of Sleepy Hollow.

New York Real Estate Journal - 17 Accord Park Drive #207, Norwell MA 02061 - (781) 878-4540