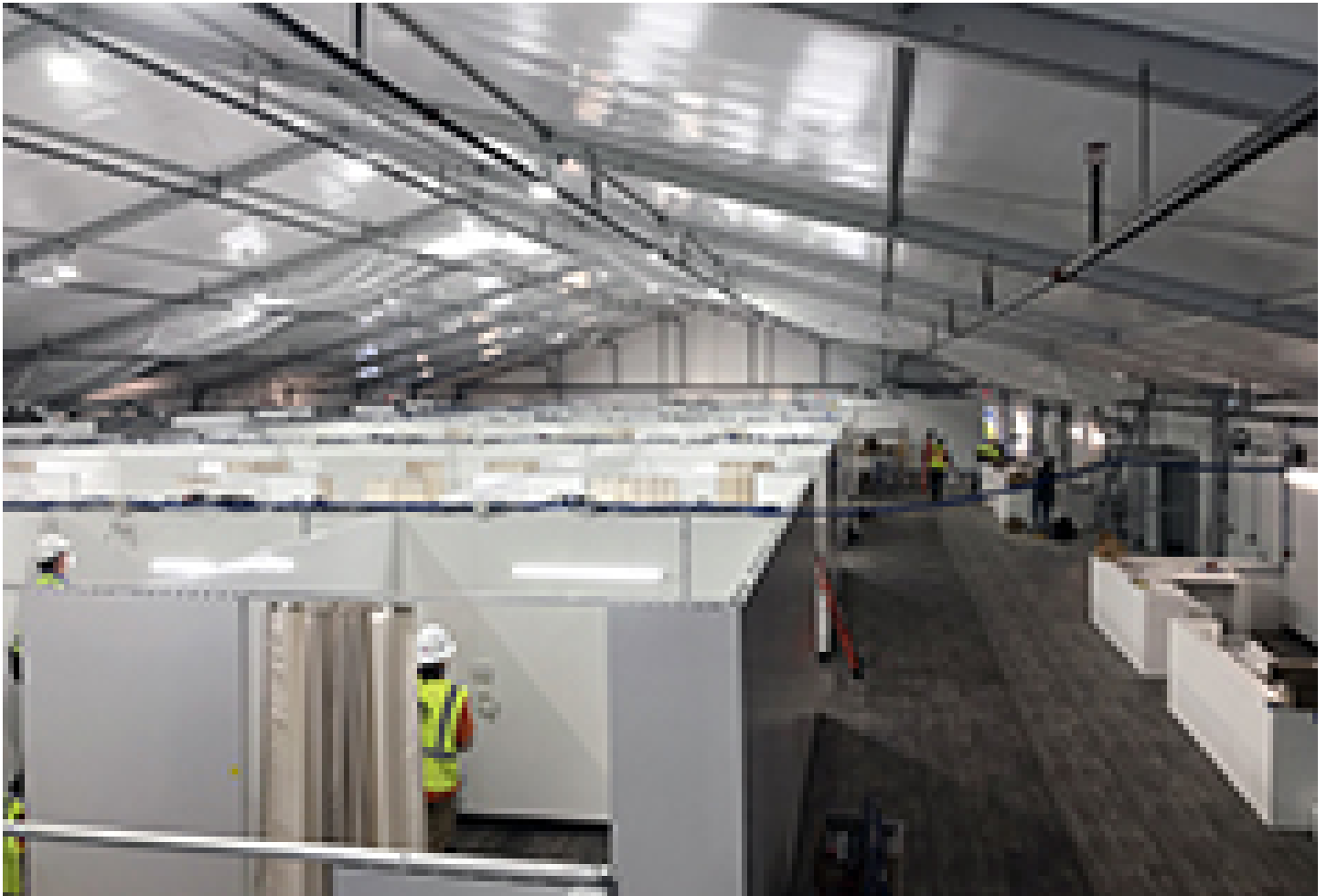




Holt Construction builds temporary hospital with U.S. Army Corps of Engineers, Bergen County and FEMA

May 19, 2020 - Design / Build



Paramus, NJ Together with the U.S. Army Corps of Engineers, Bergen County and FEMA, Holt Construction completed a temporary hospital in two weeks at Bergen New Bridge Medical Center (BNBMC). The two fully-equipped tents, the first of its kind for Army Corps temporary facility construction standards, will serve as a treatment facility for acute, non-COVID related patients due to the influx of COVID-positive patients in the main building. The temporary hospital will serve an additional 100 patients total and is located in a large parking lot adjacent to BNBMC's main building with a covered walkway linking the two facilities.

Each tent structure includes 50 inpatient beds as well as an admissions bay, nurse stations, six bathrooms with showers, hospital staff nourishment and support areas, a nurse call system in each patient room, medical gas storage, medicine storage, and soiled holding. The temporary hospital

required plumbing and sprinkler to be run from the main hospital into the barren parking lot.

With assistance from Bergen County and PSE&G representatives, new incoming primary power with a stepdown transformer was provided to power the two tents. Complete life safety provisions were also installed including fire alarm, sprinkler, fire extinguishers and other life-safety systems. This required a significant coordination effort with assistance from local architects and engineers. The extraordinary help from James J. Tedesco, County Executive of Bergen County, played a vital role in the project's success in coordinating the trades, municipality and county representatives, and PSE&G over the two-week period to meet BNBMC's deadline.

The team completed the project with help from the union labor workforce including over 80 carpenters, 20 electricians and 20 plumbers working in three shifts around the clock. Each shift was staggered in compliance with CDC, OSHA and Holt health and safety guidelines. Social distancing was strictly enforced at all times across the project site, and all personnel were equipped with N95 facemasks, face shields, gloves and goggles, in addition to sanitation stations upon entering and exiting the site.

Holt would like to sincerely thank all of those involved in this project, including but not limited to:

New Bridge Medical Center
Bergen County and James J. Tedesco, III
The United States Army Corps of Engineers
DMG – Base Camp Services
DynCorp International
FEMA
Allan Briteway Electric
Nicholson Contracting
Zabransky Mechanical
RSC Architects
Local 3
Carpenters Union 253
Operators Union 825